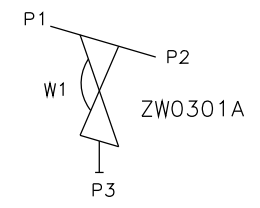


DN80 TO DN100
MAINLINE ONLY

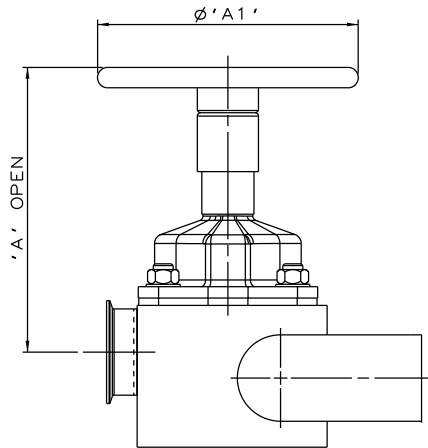


ORIENTATION AS
PER P&ID DIAGRAM FOR
OPTIMUM DRAINABILITY.

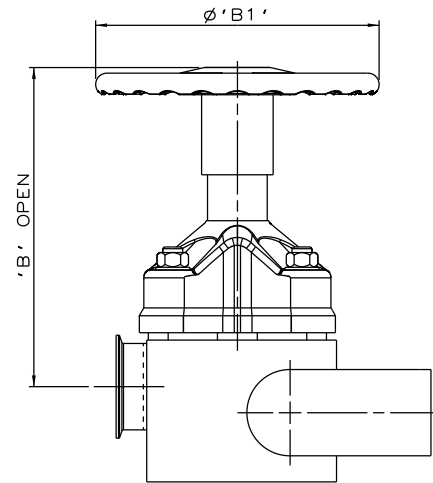
MAINLINE SIZE	A	B	C	D	øE	øF	G	BODY WEIGHT
mm	mm	mm	mm	mm	mm	mm	mm	Kgs
DN80	114.0	50.0	49.9	68.5	88.9	83.7	424.0	20.1
DN100	152.0	50.0	62.6	82.0	114.3	109.1	500.0	28.0

The information on this sheet is Private and Confidential and is the property of Crane Process Flow Technologies Limited and must not be published directly or indirectly in any manner whatsoever without the written permission of the Company and must not be used in any way detrimental to their interests.
 © Crane Process Flow Technologies

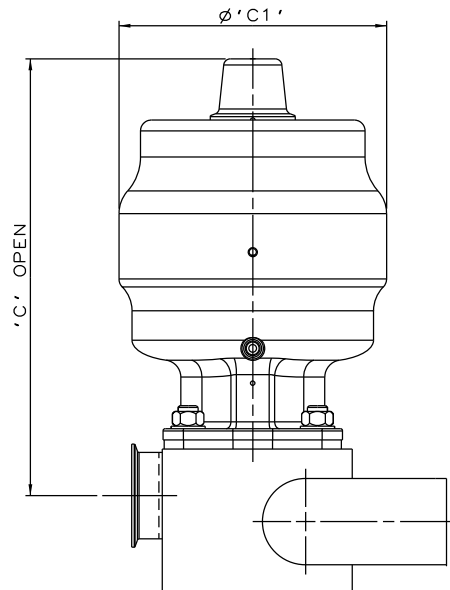
CRANE	Process Flow Technologies A Crane Co. Company	Saunders The Science Inside		
Title SCHEDULE OF LEADING DIMENSIONS FOR DN80 WEIR POINT OF USE 'T' BODY WITH : MAINLINE : ISO 1127 S1 BUTT WELD ENDS BRANCH : DN80 HYGIENIC CLAMP END WITH ISO 1127 S1 BORE				
Drawn R1	Date 17.04.12	UNCONTROLLED IN HARD COPY FORMAT		
Checked RND	Date 17.04.12			
First Angle Projection Method E		DO NOT SCALE	Drawing No. WEB-191	Issue. 1



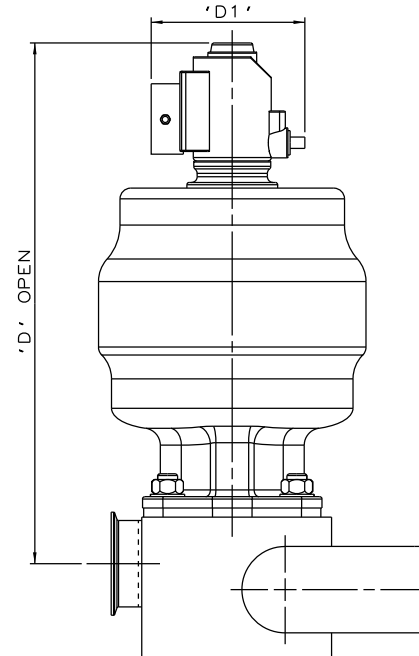
SS NON SEALED
BONNET ASSEMBLY



PES BONNET
ASSEMBLY



*S360 ACTUATOR



*S360 ACTUATOR
WITH I-VUE SENSOR

The information on this sheet is Private and Confidential and is the property of Crane Process Flow Technologies Limited and must not be published directly or indirectly in any manner whatsoever without the written permission of the Company and must not be used in any way detrimental to their interests.
© Crane Process Flow Technologies

CRANE Process Flow Technologies
A Crane Co. Company

Saunders
The Science Inside

Title
SCHEDULE OF LEADING DIMENSIONS FOR DN80/3.00
WEIR 'T' BODY WITH MAINLINE BUTT WELD ISO 1127 S1
ENDS. BRANCH HYGIENIC CLAMP END WITH ISO 1127 S1 BORE.
FITTED WITH TOPWORKS OPTIONS

Drawn	RI	Date	09.05.17	UNCONTROLLED IN HARD COPY FORMAT
Checked	RND	Date	09.05.17	
First Angle Projection Method E		DO NOT SCALE	Drawing No.	Issue.
			WEB-191-ASSY	1

*DIMENSIONS SHOW MAXIMUM ENVELOPE FOR ALL MODES

BRANCH SIZE		A		A1		B		B1		C		C1		D		D1	
mm	inch	mm	inch	mm	inch	mm	inch	mm	inch	mm	inch	mm	inch	mm	inch	mm	inch
DN80	3.00	257.5	10.14	230.0	9.06	297.5	11.71	250.0	9.84	405.5	15.96	236.0	9.29	478.5	18.84	136.0	5.33